

You did it!
Congratulations



SENIOR WEEK!

- **THURSDAY, JUNE 3 – GRADUATION PARADE**

- **SUNDAY, JUNE 6 – GRADUATION!**

Plantation
the grass is greener

CLASS OF 2021

GRADUATION PARADE
THURSDAY JUNE 3, 2021 | 9:00 AM

~PARADE RULES~

- GRADUATING SENIORS AND THEIR FAMILY MEMBERS ONLY. ONE CAR PER GRADUATE.
- PERSONAL VEHICLES ONLY (NO COMMERCIAL VEHICLES, FLATBEDS, TRAILERS, ETC.).
- PARTICIPANTS MUST REPORT TO CENTRAL PARK DR. & CLEARY BLVD. BY THEIR DESIGNATED START TIME. LATE ARRIVALS MAY BE RESTRICTED FROM PARTICIPATING. PLEASE NOTE-BROWARD BLVD. & CENTRAL PARK DR. WILL BE CLOSED TO TRAFFIC.
- PARADE ROUTE: START @ CLEARY BLVD. & CENTRAL PARK DR. VEHICLES WILL BE DIRECTED TO FOLLOW THE ROUTE THROUGH CENTRAL PARK.
- SOCIAL DISTANCING GUIDELINES MUST BE FOLLOWED AT ALL TIMES.
- PARTICIPANTS MUST STAY IN VEHICLES (NO ONE MAY RIDE IN THE BED OF A TRUCK).
- VEHICLES MAY NOT STOP DURING PARADE UNLESS INSTRUCTED TO DO SO BY PLANTATION PD. OR EVENT STAFF.
- WEST PARKING LOT RESTRICTED TO PARADE VEHICLES, SCHOOL & EVENT STAFF.
- TEACHERS AND SCHOOL STAFF WILL BE THERE TO CELEBRATE!

- Central Park in Plantation
- One personal vehicle per grad
- Grad & Family members
- Wear Herff Jones Cap & Gown
- Report to Cleary Blvd & Central Park Drive in Plantation
- Put your name on a large piece of paper in the windshield
- You must stay in the vehicle

Graduation Day – Sunday, June 6th – 11:45 a.m.

- Must have signed decorum AND media release
- Arrive at DRV PNK Stadium at **10:45 a.m.**
- Report directly to your seat
- Dress nicely with **FLAT shoes**
 - Dress pants, dress shirt, tie
 - Dress or dressy pants
 - Solid Dark Colors
- Follow stadium rules
- Follow COVID Protocols
- Inclement weather plan
- Hang gown to get out wrinkles – do NOT iron your gown!

If grads and parents drive together, follow parent/guest parking

GRAD PARKING

- Students: Commercial Blvd – enter from NW 15 Ave
- Parking in grass area –
- Students will enter through security gate (SCR)



PARENT/GUEST PARKING

- Parents/Guest: Commercial Blvd – enter from NW 12 Dr
- Parking in grass area –parents
- Parents will enter through Gate 1



Stadium Rules

The Following Items are PROHIBITED and not permitted at graduation facility.

- **No Purses, Backpacks, Backpack Purses, Cinch Bags, Sling Bags or Draw String Bags**
 - **No Clutches or Purses larger than 4" X 6"**
 - **No Audio or Video Recording Devices, GoPros, Laptops, or Selfie Sticks**
 - **No Wrapped Gifts or Balloons**
 - **No Signs**
 - **No Strollers**
 - **No weapons of any kind (Knives, Pocket Knives, Mace, Tasers, Etc.)**
 - **No Fireworks and Laser Pointers**
 - **No Airhorns or Vuvuzelas**
 - **No Animals, except Certified Service Animals**
 - **Umbrellas Are Not Permitted**
 - **Any Other Item Security may deem dangerous to Public Safety**
-

Stadium Rules

We encourage guests not to bring any bags, however, the following will be permitted:

- One clear bag **no larger than 14"x14"x6"**.
- Guests may carry a small clutch bag or purse no larger than **6.5"x6.5"** (approximately the size of a hand) with or without a strap.
- Each ticket holder, including children, may carry an approved clear bag and a clutch purse.
- Diapers and wipes may be carried in a clear bag. However, diaper bags are not permitted.
- Additional clothing, ponchos, etc. are permitted if carried loosely or in an approved clear bag.
- Large purses, coolers, briefcases, backpacks, luggage of any kind, computers/laptops bags, camera bags or any bag larger than the permissible size as described above will not be allowed.
- Exceptions will be made for medically necessary items after proper inspection and documentation.

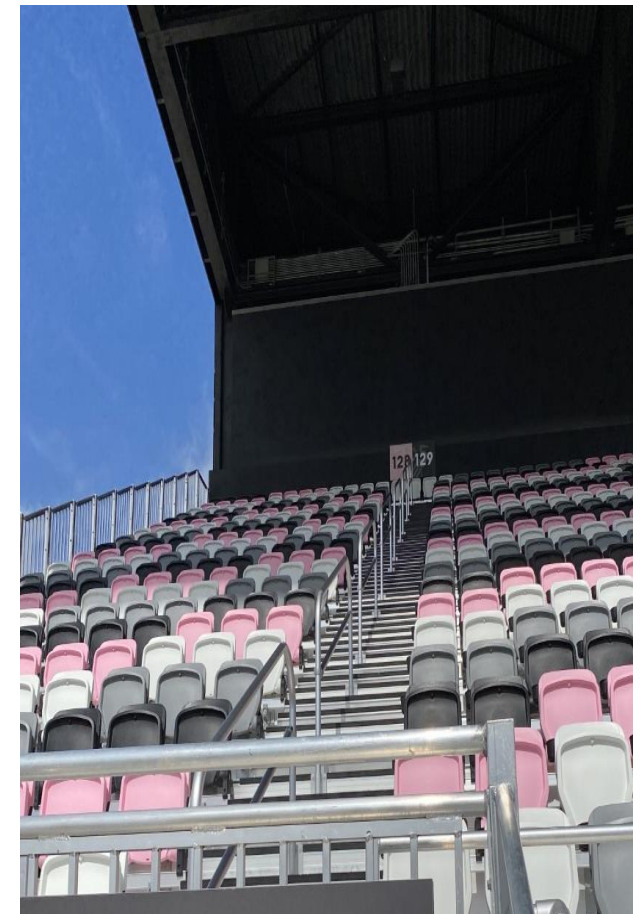
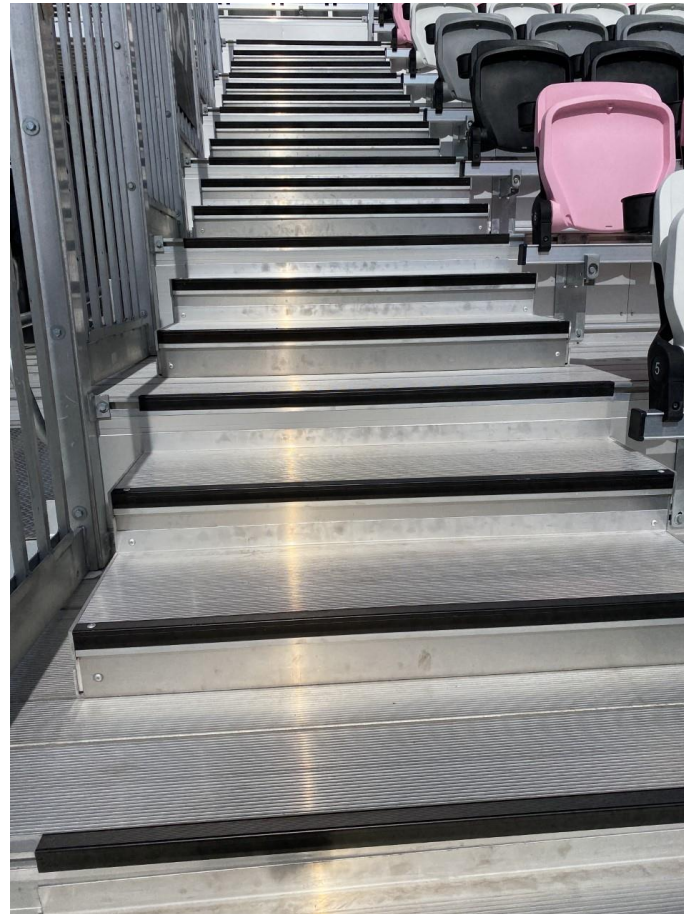
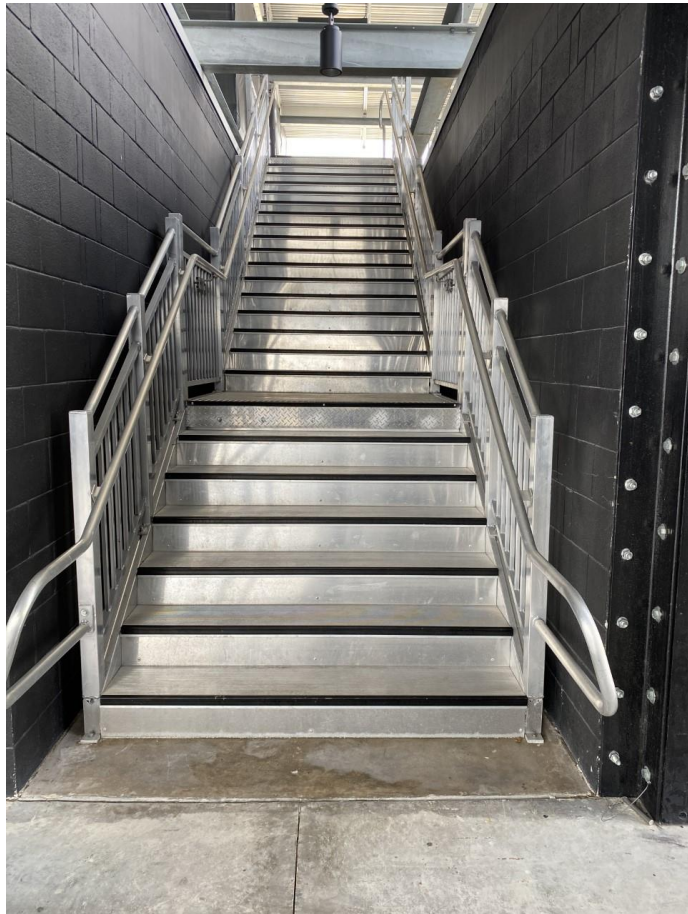
COVID Protocols

- Mask must be worn at all times
 - All graduates
 - All guests
 - All staff
- Remain 6 feet apart
- Stands –
 - Graduates must sit in assigned seat, which have 2 empty seats between each person
 - Parents must sit in pods of 2, only in seats marked with green dot.

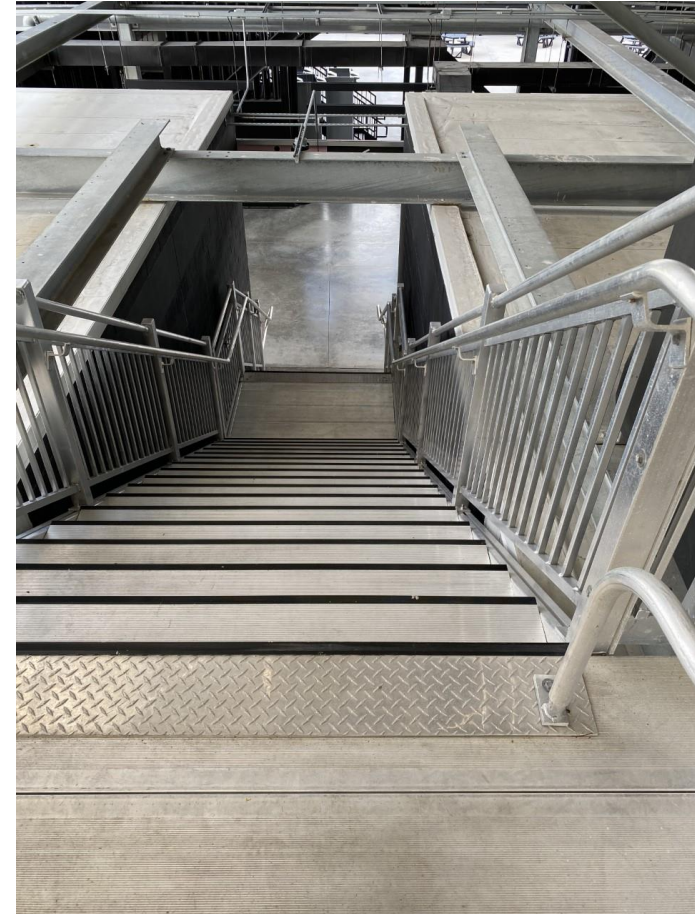
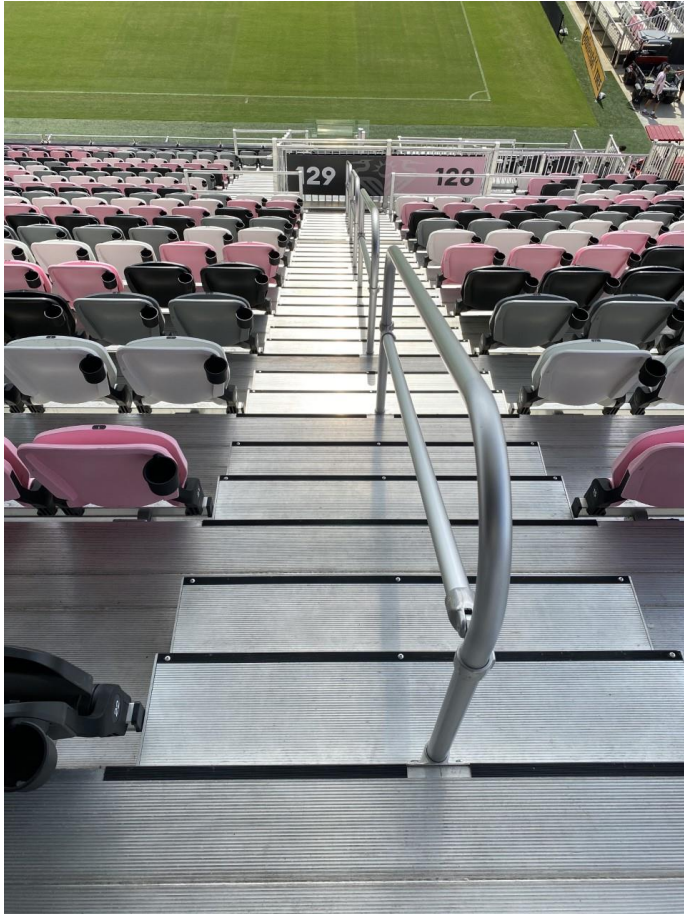
THE RED ARROWS SHOW THE PATH YOU WILL WALK DURING CEREMONY. YOUR SEATS WILL START ON ONE SECTION OF THE STADIUM AND YOU WILL END IN A DIFFERENT SECTION- TAKE EVERYTHING WITH YOU WHEN YOU GO TO CROSS STAGE!



YOU ARE GOING TO GO UP ALL OF THESE
STAIRS – THESE ARE ACTUAL PICTURES



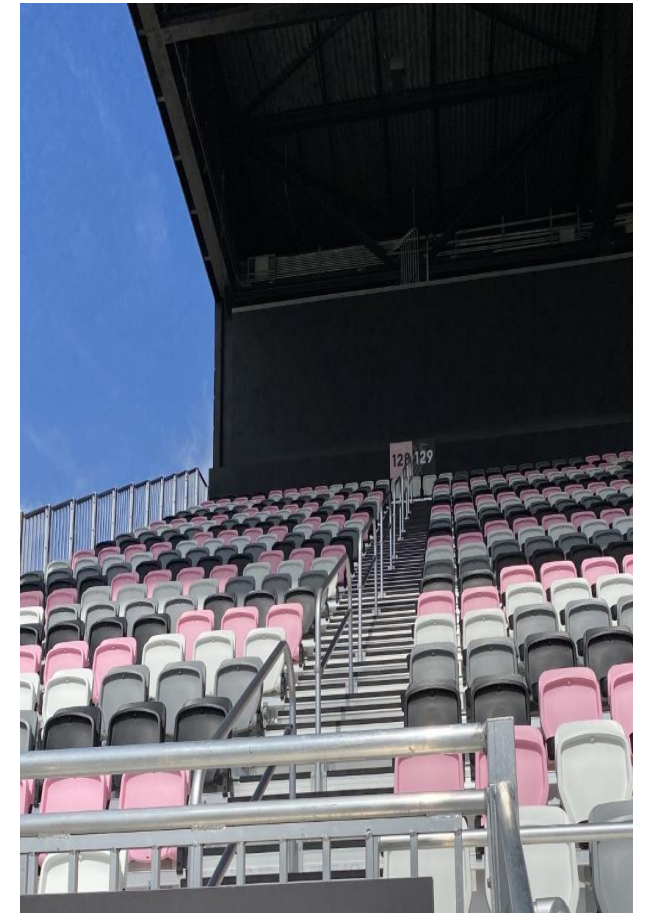
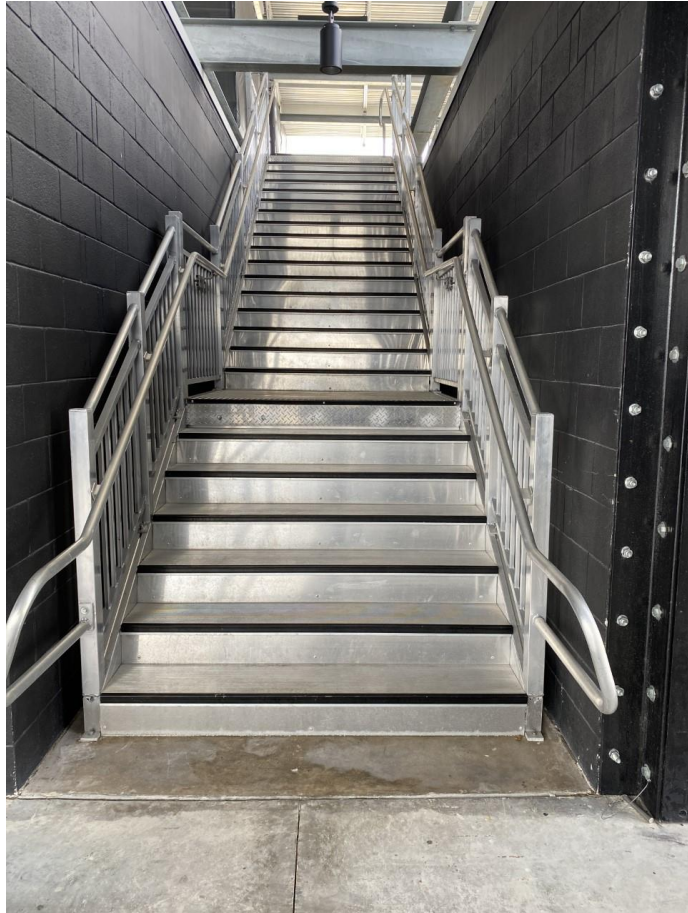
THEN DOWN ALL OF THESE STAIRS –
ALSO ACTUAL PICTURES!



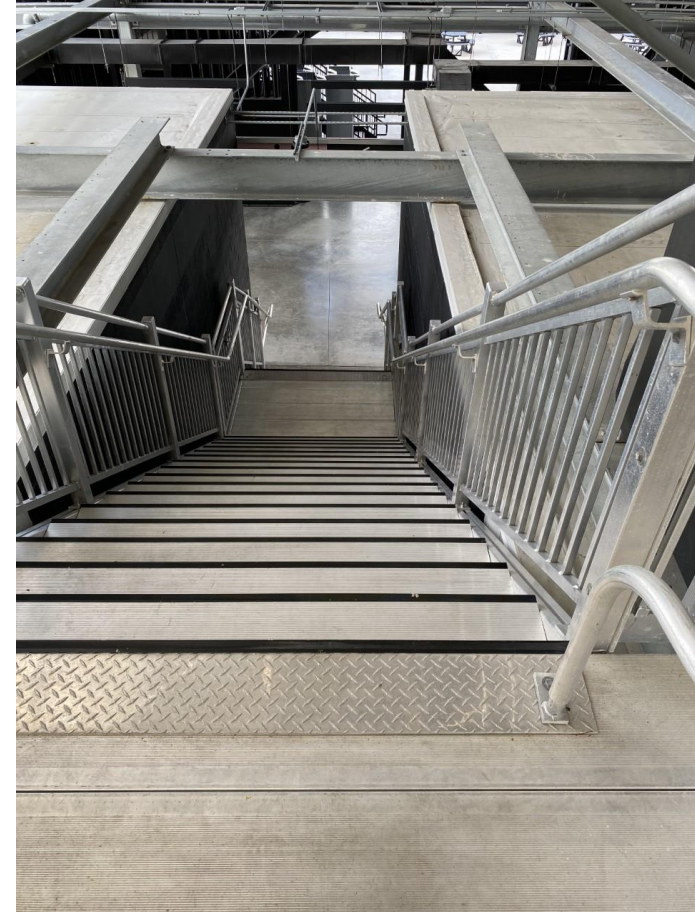
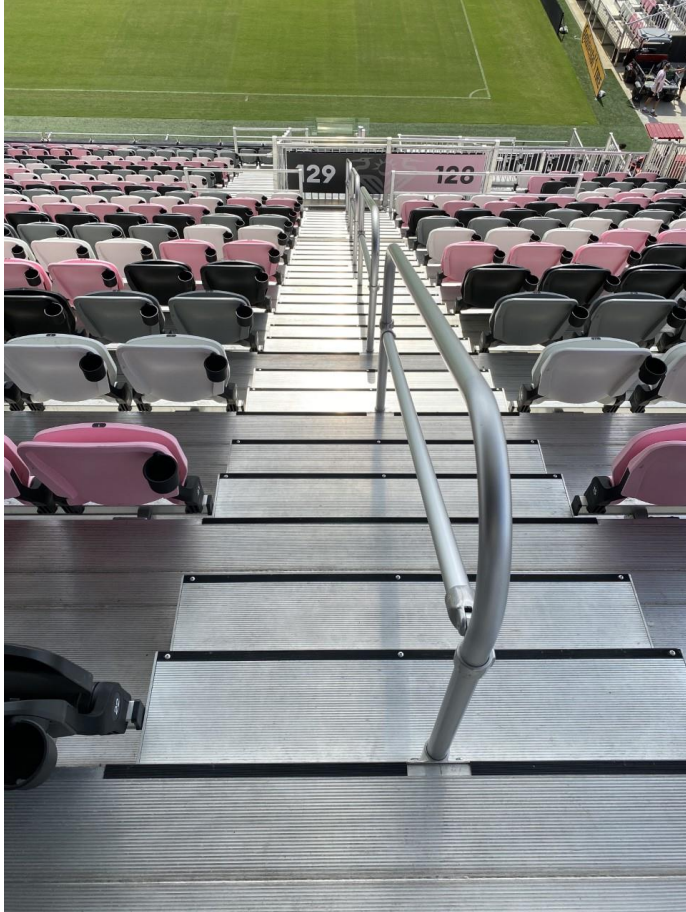
YOU WILL BE WALKING ON GRASS –
THE ENTIRE LENGTH OF THE STADIUM!



YOU ARE GOING TO GO UP ALL THESE STAIRS AGAIN



THEN DOWN ALL THESE STAIRS AGAIN



WEAR APPROPRIATE SHOES FLAT SHOES WITH BACKS



PLEASE LISTEN TO OUR ADVICE



WE DON'T WANT THIS TO BE YOU!

YOU MADE IT!



[This Photo](#) by Unknown Author is licensed under [CC BY-SA](#)